



**PHOTON SCIENCES DIRECTORATE  
ADVANCED PHOTON SOURCE**  
S. STREIFFER  
ASSOCIATE LABORATORY DIRECTOR  
DIRECTOR, ADVANCED PHOTON SOURCE

Special Advisor for Imaging and Instrumentation  
C. Jacobsen

Life Science Advisor  
R. Fischetti

J. CONNOLLY  
Deputy Assoc. Lab. Dir.  
Operations

D. M. MILLS  
Deputy Assoc. Lab. Dir.  
Science

G. SRAJER  
Deputy Assoc. Lab. Dir.  
Planning & Integration

Planning and Integration  
G. Srajer

PSC  
Communications and Information  
R. Fenner

PSC  
HR  
T. Padilla

User Administration and Support  
S. White-DePace

PSC  
Finance & Budget  
C. McGhee

**Accelerator Systems Division (ASD)**  
J. Byrd  
Division Director

M. Borland  
Assoc. Div. Dir.

**APS Engineering Support Division (AES)**  
J. Connolly  
Division Director

G. Pile  
Assoc. Div. Dir.

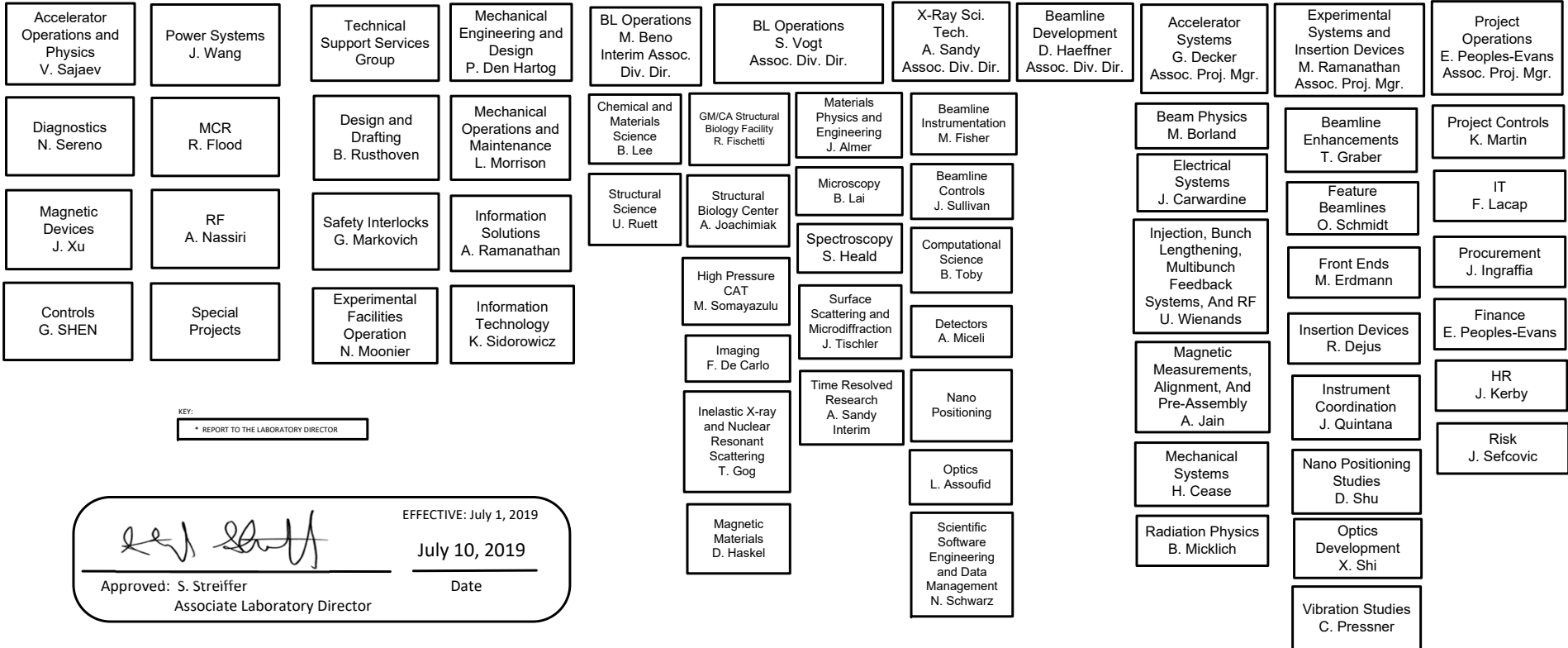
**X-Ray Science Division (XSD)**  
J. Lang  
Division Director

Senior Advisory Group

**APS Upgrade Project (APS-U)**  
R. Hettel\*  
Project Director

J. Kerby  
Chief Project Officer


E. Peoples-Evans  
Deputy Project Manager



KEY:  
\* REPORT TO THE LABORATORY DIRECTOR

EFFECTIVE: July 1, 2019

July 10, 2019

Approved:  Associate Laboratory Director

Date